

Fraulein

Fox Trot

D

D

G

G



Far a - cross deep blue wa - ters lives an old Ger - man's daugh - ter by the
When my mem - o - ries wan - der a - way o - ver yon - der, To the

A7

A7

D

D



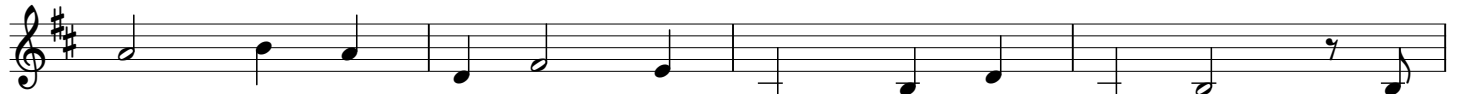
banks of the old Ri - ver Rhine. Where I
sweet - heart that I left be - hind, In a

D

D

G

G



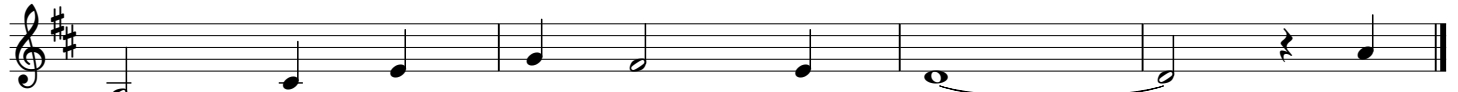
loved her and left her But I can't for - get her;
mo - ment of glo - ry her face comes be - fore me, the

A7

A7

D

D



I miss my pret - ty Frau - lein. Frau -
face of my pret - ty Frau - lein. Frau -

D

D

G

G



lein. Frau - lei - n Look up 'tward the hea - vens, Each
lein Frau - lei - n Walk down by the riv - er, Pre -

A7

A7

D

D



night when the stars start to shine. By those
tend that your hand's hold - ing mine. By those

D

D

G

G



same stars a - bove you I swear that I love you,

A7

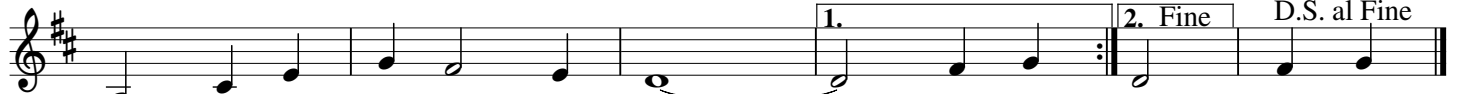
A7

D

D

D

D



You are my pret - ty Frau - lein. Far a - Far a
When my When my

1.

2. Fine

D.S. al Fine